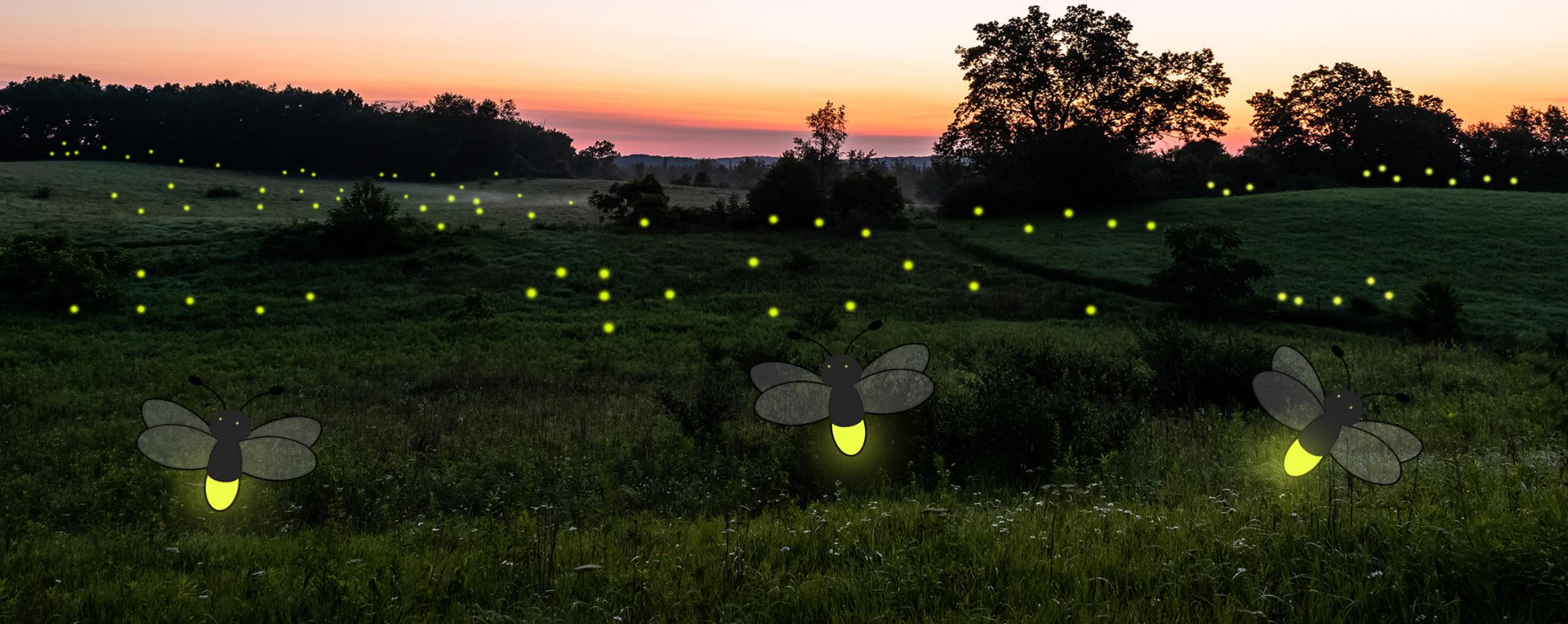


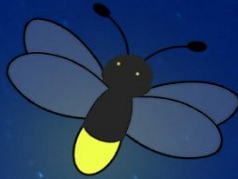
# Fly, Firefly, Fly!

By Jenae Wright and Nick Tschlis



Fireflies are awake at night.

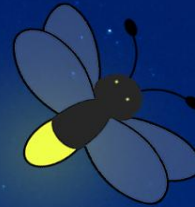
Blink



Blink



Blink



A welcome sight.

Gently collect them to make a light.





Fireflies are beetles, not flies or bugs.

Two sets of wings make them easy to spot.

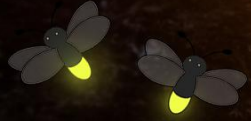




You may know them as lightning bugs,

glow worms,

or moon bugs.





Their blinking patterns are a language.

They use special blinks to find their mates.





During the day they hide in tall grass  
and leaves on the ground.





And appear at dusk to make the evening glow.





Fireflies are poisonous to some animals.

Their blinking lights warn  
predators they're  
a bad meal...

YUCK!





A photograph of a forest floor covered in brown, dry leaves and some green plants. Several glowing orange, segmented insect pupae are scattered across the ground. The background is dark and out of focus, showing more foliage and a tree trunk.

The females lay eggs in wet leaves  
on the ground in mid-summer.

The larvae hatch two weeks later.

They cannot fly yet and will eat  
snails, slugs, worms, and spiders  
for the next year.



Fireflies love fields, forests, and anywhere near water.

They live on every continent except Antarctica!






Fireflies live in your yard for up to two years! They don't travel far. The fireflies you see are your neighbors.

Your yard is their whole world.

**But they need your help!**







Leave leaf litter on  
the ground.



This is what they like to crawl in.



A night scene of a field with fireflies and a fence. The background shows a dark blue sky and silhouettes of trees. A wooden fence runs across the middle ground. The foreground is filled with tall grasses and several fireflies, some of which are glowing yellow. The text is centered in the middle of the image.

Keep grass longer and don't use  
chemicals that kill insects.



The lights confuse them, so keep them off at night.





Give them a home and they'll put on a show!

